

Special Report 1 Cambodia : New JCM signatory country

Special Report 2 Overview of JCM Project Planning / Feasibility / REDD+ Studies and Model Projects in FY 2014

Event Report SB40 and Carbon Expo 2014

New Mechanisms Information Platform Update JCM web page and SB40

Special Report 1 Cambodia : New JCM signatory country

The new scheme proposed by Japan, the Joint Crediting Mechanism (JCM), contributes to global actions for greenhouse gas (GHG) emissions reductions and removals by sinks through the promotion of low carbon technologies in developing countries.

Cambodia : New JCM signatory country

April 11th, 2014, Mr. Yuji Kumamaru, Ambassador Extraordinary and Plenipotentiary of Japan to the Kingdom of Cambodia and H.E. Dr. Say Samal, Minister of Environment of the Kingdom of Cambodia, signed the bilateral document of the Joint Crediting Mechanism (JCM) in Phnom Penh, the Kingdom of Cambodia. The JCM will be officially launched in the Kingdom of Cambodia. JCM signatory countries are Mongolia, Bangladesh, Ethiopia, Kenya, Maldives, Viet Nam, Lao PDR, Indonesia, Costa Rica, Palau, Cambodia and Mexico, as of 20 August 2014.



Signing with Cambodia

“Energy Saving by Efficiency Improvement of Water Treatment Plants of Phnom Penh Water Supply Authority (Cambodia)”

【 JCM Planning Study 】

METAWATER Co., Ltd. and MATSUO CONSULTANTS CO., LTD



ICHIRO FUKUSHIMA
Executive Director
General Manager,
International Business Center

● Project summary

The purpose of this project is to introduce an energy saving system for renovation of old facilities through a highly efficient Japanese management system, resulting in GHG emissions reductions at water purification plant managed by the Phnom Penh Water Supply Authority (PPWSA), the largest water supplier in Cambodia. This project is expected to reduce electric consumption: due to high price of electricity in Cambodia, cost for electricity account for 29% of the total cost in the plant.

● Collaboration between public and private sectors

Institutional arrangements are a key part for conducting measurement, reporting and verification (MRV) successfully. METAWATER Co., Ltd. has worked in collaboration with the Kitakyushu City Water and Sewer Bureau, which has experience in how to manage energy saving systems, and use this knowledge

for training of PPWSA on maintenance and MRV, and review its results. This activity contributes not only to improve management and maintenance skills, but also to developing good practices with PPWSA. It is expected that this project can influence not only Phnom Penh, but also other regions, by contributing in the reduction of GHG emissions and disseminate this activity as a model case of energy saving to other water purification plants.

● Way forward

This project helps sharing the idea that energy saving in the long run, can lead to reduce the total costs. It is expected to disseminate environmentally friendly technologies, products, and systems in Cambodia. In addition, this activity contributes to address comprehensive problems including water supply and quality of life.

Adoption of 25 feasibility studies and 7 model projects for FY 2014

The MOEJ adopted 7 JCM Model Projects, 5 JCM Project Planning Studies (PS), 17 JCM Feasibility Studies (FS) and 3 REDD+ Studies (REDD+). (Additional JCM Model Projects may be adopted later within this fiscal year.) The selected entities will be conducting projects and/or studies. In more specific terms, JCM Model Projects are to introduce actual hardware. Other studies are expected to conduct studies in cooperation with governments of host countries, project counterparts and prospective verification bodies.

JCM Model Projects

JCM model projects conduct activities for CO₂ emission reduction through advanced technologies in developing countries. The amount of GHG emissions reductions should be measured, reported and verified. For the purpose of using part of them to achieve Japan's emission reduction target, the MOEJ subsidizes an investment cost of the JCM Model Projects (up to the half) for international consortiums, which include Japanese entities.

Viet Nam



- **Anaerobic Digestion of Organic Waste for Biogas Utilization at Market**
Organic waste discharged from a market is used to generate biogas in a methane fermentation system. The biogas is then supplied to a seafood processing factory.
- **Eco-driving by Utilizing Digital Tachograph System**
Trucks are fitted with eco-drive improving system using digital tachographs, realizing CO₂ emission reduction and safe-driving.

Indonesia

- **Power Generation by Waste Heat Recovery in Cement Industry**
Waste heat recovery system with suspension preheater boiler and air quenching cooler boiler is installed in cement production process and generates electricity (28 MW) to be used in the cement plant.
- **Palm Waste Biomass Power Generation Project**
Fluidized bed furnace is installed in a biomass power generation plant (6.2 MW) utilizing EFB (Empty Fruit Bunch) as a fuel.
- **Solar Power Hybrid System Installation to Existing Base Transceiver Stations in Off-grid Area**
Solar power (900 kW) and lithium ion batteries are installed to replace inefficient diesel generators at mobile base stations.
- **Energy Saving through Introduction of Regenerative Burners to the Aluminum Holding Furnace of the Automotive Components Manufacturer**
Regenerative burners which recover heat from exhaust gas efficiently are installed in a casting process.
- **Energy Saving for Textile Factory Facility Cooling by High Efficiency Centrifugal Chiller**
Chiller with a high efficiency compressor and economizer cycle are installed.



JCM Studies

JCM Project Planning Study (PS)

JCM Project Planning Study develop a project for JCM registration. The purposes of JCM PS is to develop activities and build a financial plan to be implemented and methodologies applicable for each project.

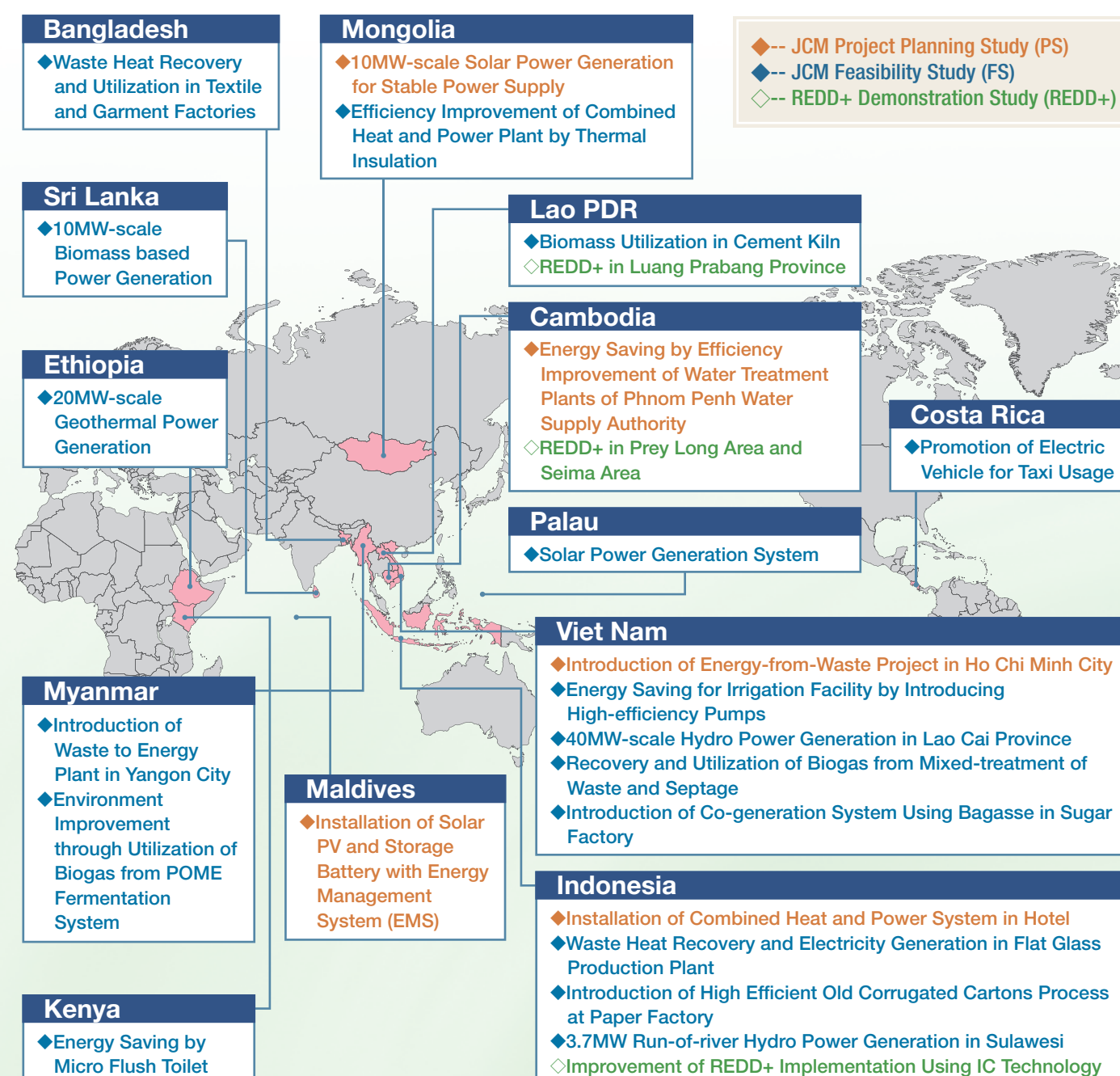
JCM Feasibility Study (FS)

The purposes of JCM FS is to develop activity and financial plan to be implemented and methodology applicable for its project.

REDD+ Study (REDD+)

The purposes of the REDD+ Study is to develop activities and build a financial plan to be implemented as well as to develop and demonstrate the methodology applicable for each project.

- ◆-- JCM Project Planning Study (PS)
- ◆-- JCM Feasibility Study (FS)
- ◇-- REDD+ Demonstration Study (REDD+)





The MOEJ and the OECC jointly organized a side event titled, "Supporting Mitigation Actions in Developing Countries - Promotion of the JCM, NAMAs and Other Initiatives" at the 40th session of the Subsidiary Body for Implementation (SBI) of the UNFCCC in Bonn, Germany on 5 June 2014.

This side event featured the Japanese government's initiatives to support developing countries' efforts to mitigate the effects of climate change, including the promotion of the JCM and Nationally Appropriate Mitigation Actions (NAMAs). The event brought an opportunity to introduce financing programmes to develop JCM projects as well as the capacity building cooperation activities for the development of NAMAs in Asia.

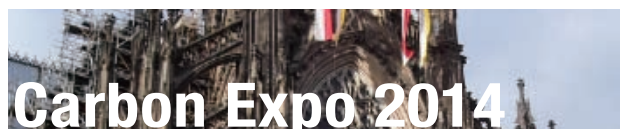
The Event was attended by more than 30 participants. During the question and answer session, there were questions and comments in relation to the incentives of joining the JCM, the relationship between the JCM and NAMAs and the position of the JCM under international negotiations.



Conference at SB40



Side Event



Carbon Expo 2014 was organized by the World Bank Group, the International Emissions Trading Association (IETA) and Koelnmesse GmbH in Cologne, Germany from 28 – 30 May 2014.

OECC organized an exhibition booth at the Carbon Expo 2014 and introduced Japan's initiatives including the JCM and capacity-building for NAMAs development.

OECC was delighted to welcome nearly 100 visitors (incl. stakeholders from project participant, consultant, government, international organization, media, and academics.) at the booth and had fruitful exchanges of information during the three days of the event. The main topic of discussion was on JCM and its recent developments, and OECC received many questions and opinions related to Japanese initiatives.



Exhibition Booth



Side Event

New Mechanisms Information Platform

The Joint Crediting Mechanism (JCM)



The document "Recent Development of The Joint Crediting Mechanism (JCM)" has been updated in the New Mechanisms Information Platform website. Also this website introduce relevant documents of the JCM / BOCM (e.g. methodology and project information) and information on JCM partner countries

<http://www.mmechanisms.org/e/initiatives/index.html>

What's New

The Subsidiary Body (SB)

UNFCCC SB40 in Bonn, Germany
Reports of Other Side Events

Side events have been organized as a platform for parties, UN agencies, and observer organizations to highlight diverse climate change issues at UNFCCC conferences. Side Events are a vital component of the sessions, as they provide opportunities for information dissemination, capacity building, policy discussions and legitimizing global governance.

Side events covered areas including mitigation, adaptation, market mechanisms, GHG inventory, scientific and technological matters, and support through finance, technology and capacity-building. The organizers and participants include Governments representatives, multilateral and bilateral organizations representatives, researchers from think tanks, universities and other research organizations, NGOs and other social organizations, representatives from the private sector and students.

Reports of Other Side Events

Date & Time	Event Title	Organizer(s)
June 4, 2014 13:15-14:15	"NAMA Facility - Lessons learned from providing finance for the implementation of early NAMAs"	NAMA Facility Secretariat
June 5, 2014 15:00-16:30	"Supporting mitigation actions in developing countries - Promotion of the JCM, NAMAs and other initiatives"	MOEJ / GAC / OECC

Reports on side events held in SB40 are updated on the following page of the New Mechanisms Information Platform website.

http://www.mmechanisms.org/e/info/event/details_oecc_SB40report.html

Published by

Overseas Environmental Cooperation Center, Japan (OECC)

NP-ONARIMON 3rd floor, 3-25-33,
NISHI SHINBASHI MINATO-KU, TOKYO 105-0003 JAPAN

E-mail: info@mmechanisms.org
Website: <http://www.mmechanisms.org/e/>



The publication of this brochure is a part of a commissioned project to the OECC by the MOEJ.



古紙・UI-P配合率100%再生紙を使用
Utilizing 100% post-consumer recycled paper pulp