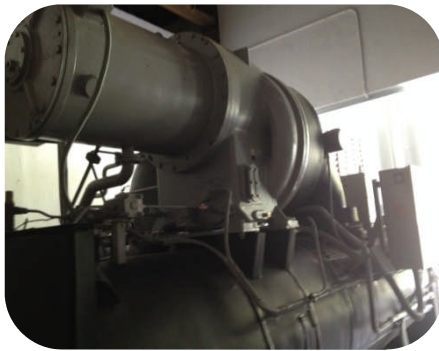


Current status of the JCM implementation in Indonesia

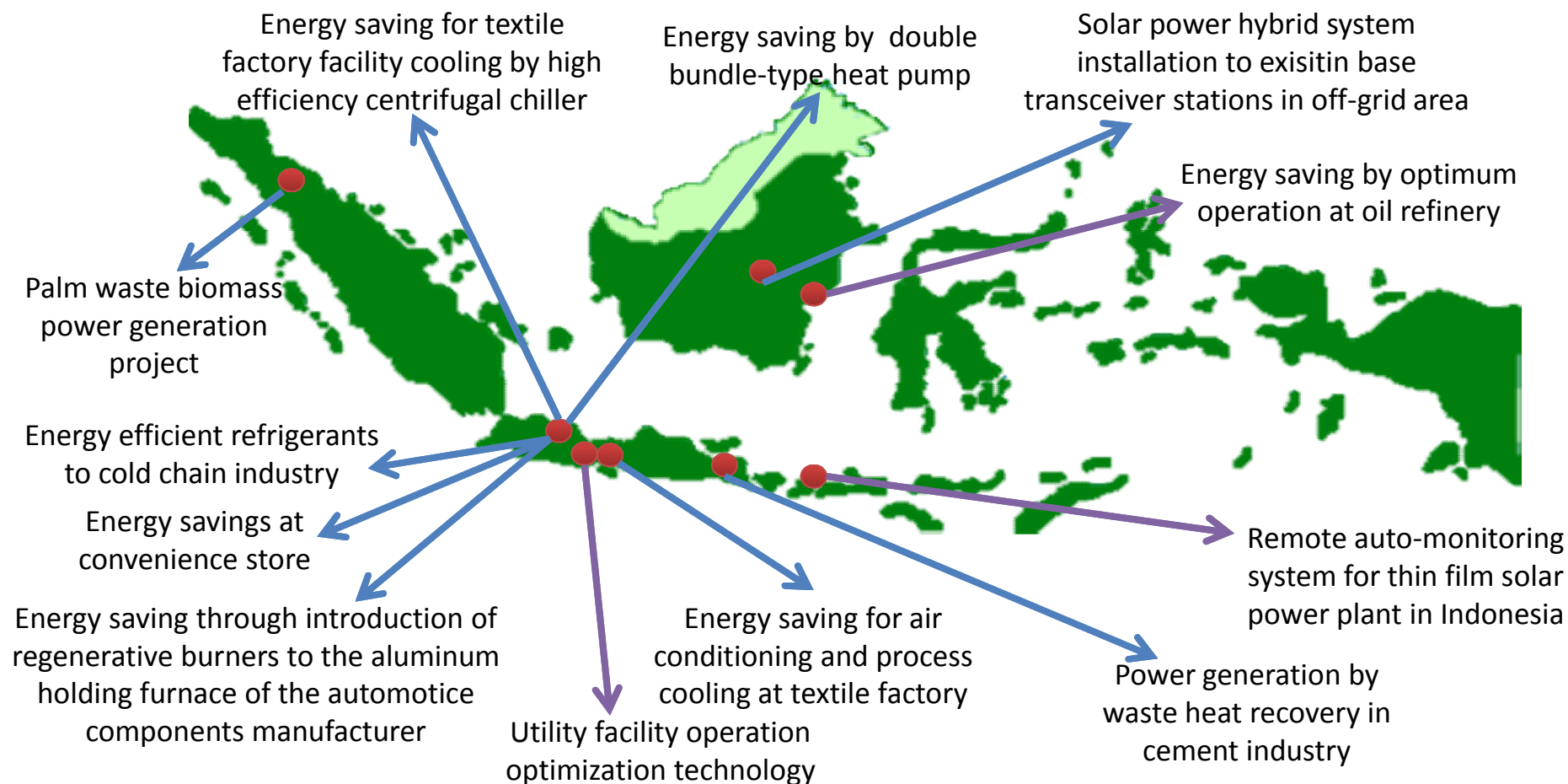


Presentation outline



- Status of projects
- Status of feasibility studies
- Methodologies
- Communication and M&E activities
- Sustainable development criteria

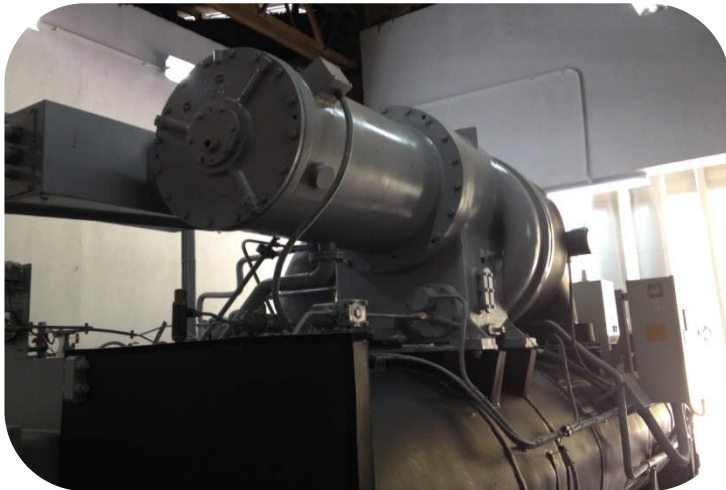
Projects in the pipeline



12 Projects = 10 Energy efficiency + 2 Renewable energy

Registered JCM project

“Energy Saving for Air-Conditioning and Process Cooling by Introducing High-efficiency Centrifugal Chiller”



- Collaboration between **Ebara Equipment & Systems** and **PT Primatexco Indonesia**
- Location: Batang, Central Java
- Estimated total emissions reduction **799 tCO₂ eq.** by 2020
- Annual **965 MWh** energy saving

Initiative from Indonesia project participant

– Study case: WHR in cement industry



Project participants: PT Semen Indonesia & JFE Engineering

- Company's own initiative to reduce energy consumption from coal
- Total investment from project: 52 million USD
- 17% of total investment is covered by MOE subsidy



FS in Indonesia (2010-2014)



2010-2013



2014

JCM Methodologies in Indonesia



Indonesia JCM Secretariat in proposed methodologies:

- Experts review
- Using methodology review form
- Discussion meetings between related ministries
- Prepare website for public comment

4 approved methodologies

- Power Generation by Waste Heat Recovery in Cement Industry
- Energy Saving by High-Efficiency Centrifugal Chiller
- Installation of Energy-Efficient Refrigerators Natural Refrigerants at Food Industry Cold Storage and Frozen Food Processing Plant
- Installation of Air-Conditioning for Grocery Store

3 proposed methodologies being developed:

- Installation of LED lighting for grocery store
- GHG emission reductions through optimization of refinery plant
- GHG emission reductions through optimization of boiler operation in Indonesia

Communication and M&E activities

1



Information sharing

2



Meetings

3



Site visits

Way of communication between project participants, Indonesia government, and Japan government

Ensure PP from both sides understand JCM scheme:

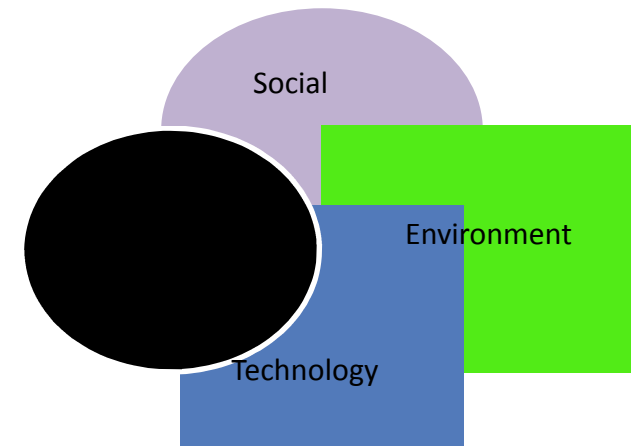
- PP from Japan probably understands JCM scheme, but not Indonesia's regulation
- PP from Indonesia may not know the collaboration they are going through with their Japanese partner(s) is under JCM scheme.

SD criteria – proposal from Government of Indonesia



- **Why we push SD criteria to be part of JCM?**

1. One of JCM purpose is to contribute to sustainable development
2. Indicator is needed to evaluate achievement in JCM.
3. Ensure every JCM project will deliver co-benefit for Indonesia.
4. Fulfill global standards for appropriate climate change mitigation action under the UNFCCC
5. Enforcement of sustainable development criteria suitable for Indonesian conditions



- **SD implementation plan (SDIP) will be submitted during request of registration**
- **SDIP is assessed annually during request of issuance**

For more information

- Visit our website: www.jcmindonesia.com
- Contact us: secretariat@jcmindonesia.com

JCM Secretariat Indonesia

Kementerian BUMN Building, 18th floor

Jl. Medan Merdeka Selatan 13, Jakarta 10110